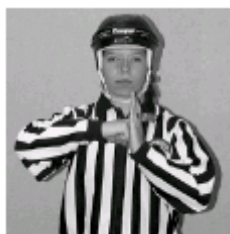


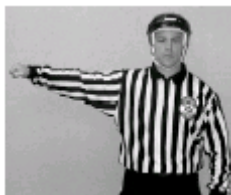
SUMMARY OF RINGETTE PENALTIES

Penalty	Time Served
Minor Slashing, body contact, etc.	2:00 (served by offender)
Unsportsmanlike Conduct Conduct unbecoming a sportsman: remarks, gestures, etc.	2:00 (fully served by offender)
Major Deliberate & aggressive minor penalty infraction (except ill substitution./delay of game/interference/ unsportsmanlike conduct)	4:00 (fully served by offender)
Misconduct Offensive language/gesture, <u>Coach stepping on ice</u>	Ejection of offender plus 2:00 fully served by teammate
Match Attempt to injure- Kick, spear, butt-end, Continued 'Misconduct' after penalty assessed, Excessive abuse of officials.	Ejection of offender plus 4:00 fully served by teammate Plus Suspension
Penalty Shot	Award replaces Minor penalty
Penalty Time Accumulation	10 minutes In penalties (teammate serves remaining penalty time)

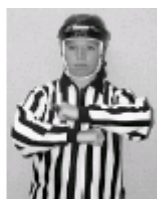
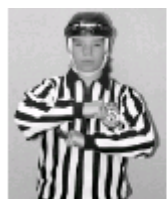
MINOR PENALTY SIGNALS



Boarding



Body Contact



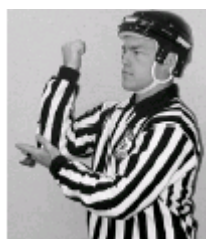
Charging



Cross Checking



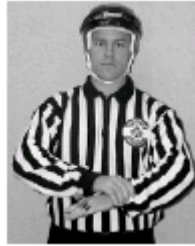
Delay of Game



Elbowing



High Sticking



Holding



Hooking



Illegal Substitution



Interference



Penalty Shot



Slashing



Tripping



Unsportsmanlike Conduct



Major Penalty indication followed by minor penalty signal



Rough Play



Misconduct or Match Penalty

PENALTY SHOT AWARD

A Penalty Shot is awarded if a member of the defending team prevents the scoring of a goal by:

- intentionally dislodging the net from its normal position.
- throwing a stick at the ring.
- committing a goal crease violation.

A Penalty Shot is awarded if an attacking player is on a breakaway in the attacking zone, with the stick in the ring, and no opponents to get past other than the goalkeeper:

- and a member of the defending team commits a penalty that prevents that attacking player from taking a clear shot on goal.
- the defending goalkeeper intentionally dislodges the net from its normal position, **or removes their helmet, head protector, or facial protector.**
- in the last 2 minutes of the game a defending player enters the freepass circle (within the 5 seconds allowed) during the taking of a freepass by the attacking team.
-

A Penalty Shot is awarded during goalkeeper substitution:

- if an attacking player is on a breakaway in the attacking zone, with the stick in the ring, and only a single opponent to get past; and a member of the defending team:
- commits a penalty that prevents the attacking player from taking a clear shot on goal.
- intentionally, dislodges the net from its normal position.
- prevents the scoring of a goal by deliberately piling snow or making any obstacle on, around, or in the goal crease.

- if a member of the defending team, in addition to the AGK, enters the goal crease and any of the defenders in the goal crease prevents the scoring of a goal.

A Penalty Shot is awarded during the last two minutes of regulation time or at any time during overtime:

- if the ring is in an end zone and a skater, in excess of the maximum number permitted in that defending zone restricted area, deliberately enters that area and becomes involved in the play while there are too many skaters in that area.
- If an attacking player is taking a free pass and a member of the defending team deliberately enters that defending zone free pass circle and becomes involved in the play.

NOTE: A goal scored during the delayed signaling of a Penalty Shot Award nullifies the Penalty Shot Award. Penalty assessment following the goal is in accordance with the current penalty situation.

- If playing time expires during the delayed calling of a Penalty Shot, the Penalty Shot shall take place at the conclusion of that period of play.
- If the penalty infraction for which a Penalty Shot is awarded is one that would normally incur a:
 - Minor penalty, then the Penalty Shot replaces that penalty.
 - fully served penalty, then that penalty is assessed as well.

Selection of Shooter

- If a Penalty Shot is awarded to a player on a breakaway, that player shall take the Penalty Shot.
- If the player awarded a Penalty Shot commits a penalty during the same play, that player shall take the Penalty Shot prior to serving the penalty, unless that player is ejected from the game.
- If the player awarded a Penalty Shot is injured or is ejected from the game, the coach shall select any skater of that team who was on the ice at the time of the infraction to take the Penalty Shot.